

# JVC

## SCHEMATIC DIAGRAMS

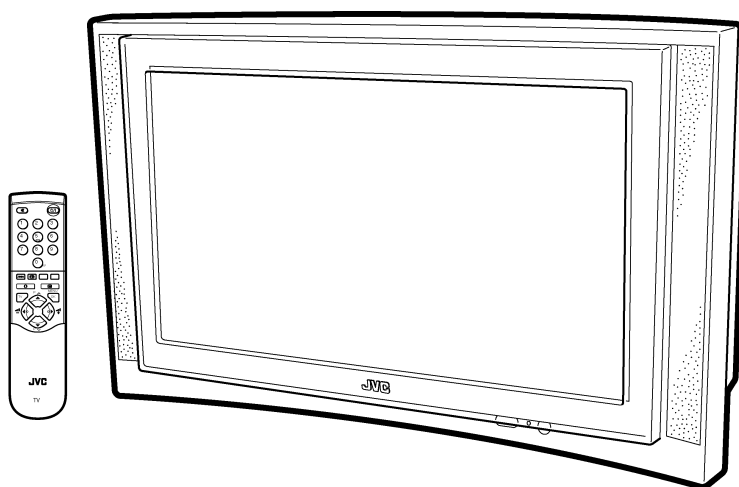
### COLOUR TELEVISION

# AV32L2EUGR AV32L2EUBL AV32L2EUGY

CD-ROM No.SML200106

BASIC CHASSIS

MF



## CONTENTS

■ NOTE ON USING CIRCUIT DIAGRAMS .....	2-1
■ SEMICONDUCTOR SHAPES .....	2-2
■ BLOCK DIAGRAM .....	2-3
■ CIRCUIT DIAGRAMS .....	2-5
■ PATTERN DIAGRAMS .....	2-21

# STANDARD CIRCUIT DIAGRAM

## NOTE ON USING CIRCUIT DIAGRAMS

### 1. SAFETY

The components identified by the  $\Delta$  symbol and shading are critical for safety. For continued safety replace safety critical components only with manufactures recommended parts.

### 2. SPECIFIED VOLTAGE AND WAVEFORM VALUES

The voltage and waveform values have been measured under the following conditions.

- (1) Input signal :PAL Colour bar signal
  - (2) Setting positions of each knob/button and variable resistor :Original setting position when shipped
  - (3) Internal resistance of tester :DC 20k  $\Omega$ /V
  - (4) Oscilloscope sweeping time :H  $\Rightarrow$  20 $\mu$ S/div  
:V  $\Rightarrow$  5mS/div  
:Others  $\Rightarrow$  Sweeping time is specified
  - (5) Voltage values :All DC voltage values
- \* Since the voltage values of signal circuit vary to some extent according to adjustments, use them as reference values.

### 3. INDICATION OF PARTS SYMBOL [EXAMPLE]

- In the PW board :R1209→R209

### 4. INDICATIONS ON THE CIRCUIT DIAGRAM

#### (1) Resistors

##### ● Resistance value

- No unit :[ $\Omega$ ]
- K :[K  $\Omega$ ]
- M :[M  $\Omega$ ]

##### ● Rated allowable power

- No indication :1/16[W]
- Others :As specified

##### ● Type

- No indication :Carbon resistor
- OMR :Oxide metal film resistor
- MFR :Metal film resistor
- MPR :Metal plate resistor
- UNFR :Uninflammable resistor
- FR :Fusible resistor

\*Composition resistor 1/2 [W] is specified as 1/2S or Comp.

#### (2) Capacitors

##### ● Capacitance value

- 1 or higher :[pF]
- less than 1 :[ $\mu$ F]

##### ● Withstand voltage

- No indication :DC50[V]
- AC indicated :AC withstand voltage [V]
- Others :DC withstand voltage [V]

\*Electrolytic Capacitors

47/50[Example]:Capacitance value [ $\mu$ F]/withstand voltage[V]

- Type
- No indication :Ceramic capacitor
- MY :Mylar capacitor
- MM :Metalized mylar capacitor
- PP :Polypropylene capacitor
- MPP :Metalized polypropylene capacitor
- MF :Metalized film capacitor
- TF :Thin film capacitor
- BP :Bipolar electrolytic capacitor
- TAN :Tantalum capacitor

#### (3) Coils

- No unit :[ $\mu$ H]
- Others :As specified

#### (4) Power Supply

- :B1
- :B2
- :9V
- :5V

\*Respective voltage values are indicated

#### (5) Test point

- :Test point
- :Only test point display

#### (6) Connecting method

- :Connector
- :Wrapping or soldering
- :Receptacle

#### (7) Ground symbol

- :LIVE side ground
- :ISOLATED(NEUTRAL) side ground
- :EARTH ground
- :DIGITAL ground

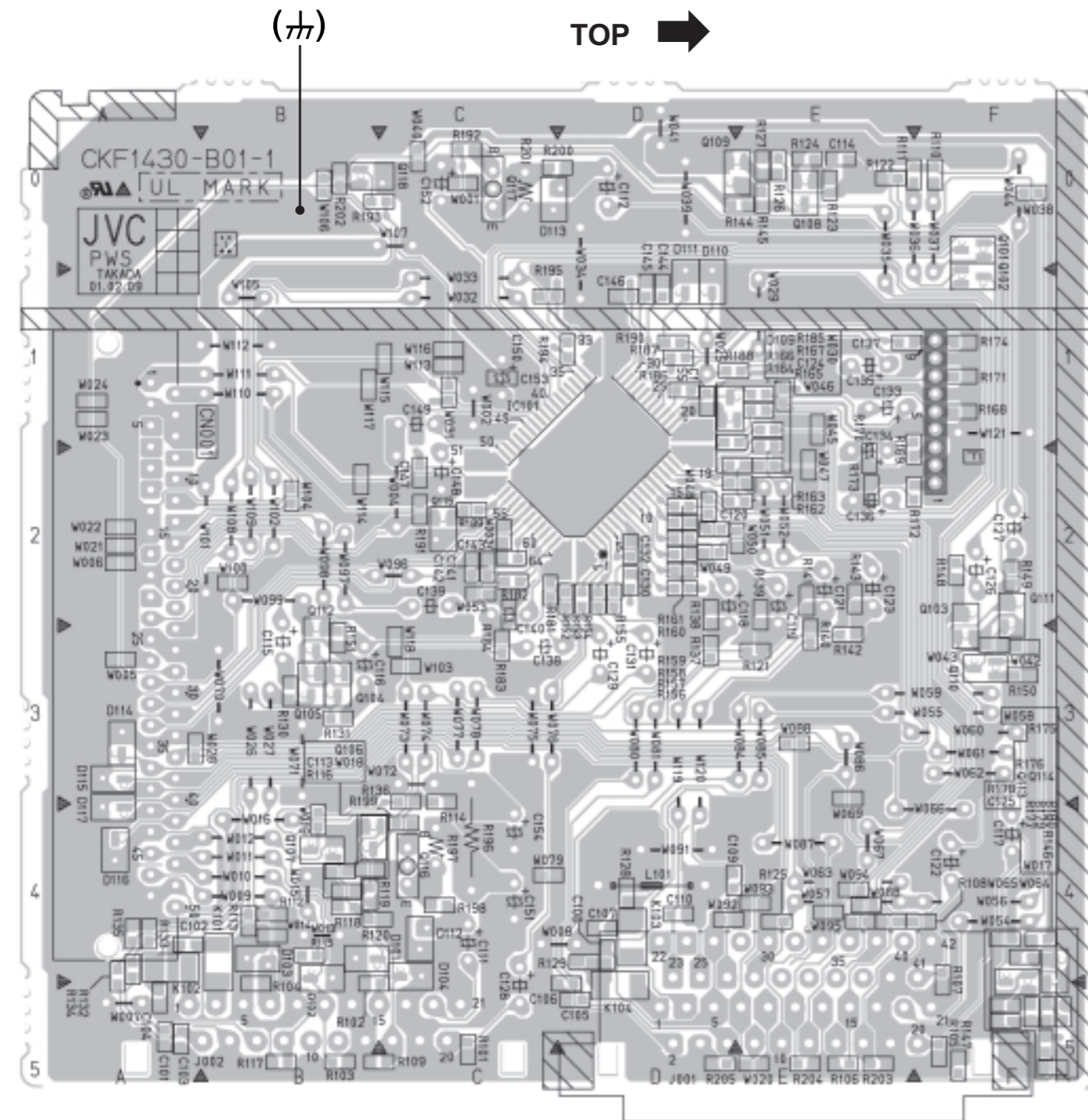
## 5. NOTE FOR REPAIRING SERVICE

This model's power circuit is partly different in the GND. The difference of the GND is shown by the LIVE : (⊥) side GND and the ISOLATED(NEUTRAL) : (↘) side GND. Therefore, care must be taken for the following points.

- (1) Do not touch the LIVE side GND or the LIVE side GND and the ISOLATED(NEUTRAL) side GND simultaneously. If the above caution is not respected, an electric shock may be caused. Therefore, make sure that the power cord is surely removed from the receptacle when, for example, the chassis is pulled out.
- (2) Do not short between the LIVE side GND and ISOLATED(NEUTRAL) side GND or never measure with a measuring apparatus ( oscilloscope, etc.) the LIVE side GND and ISOLATED(NEUTRAL) side GND at the same time. If the above precaution is not respected , a fuse or any parts will be broken.

◇ Since the circuit diagram is a standard one, the circuit and circuit constants may be subject to change for improvement without any notice.

When ordering parts, please use the numbers that appear in the Parts List.



# CONTENTS

**SEMICONDUCTOR SHAPES** ..... 2-2

**BLOCK DIAGRAM** ..... 2-3

**CIRCUIT DIAGRAMS**

**MAIN PWB CIRCUIT DIAGRAM** ..... 2-5

**POWER & DEF PWB CIRCUIT DIAGRAM** ..... 2-9

**100Hz PWB CIRCUIT DIAGRAM** ..... 2-11

**MICON PWB CIRCUIT DIAGRAM** ..... 2-13

**FRONT CONTROL & SIDE CONTROL PWB CIRCUIT DIAGRAM** ..... 2-15

**CRT SOCKET PWB CIRCUIT DIAGRAM** ..... 2-17

**AV SW PWB CIRCUIT DIAGRAM** ..... 2-19

**PATTERN DIAGRAMS**

**MAIN PWB PATTERN** ..... 2-21

**POWER & DEF PWB PATTERN** ..... 2-23

**100Hz PWB PATTERN** ..... 2-25

**MICON PWB PATTERN** ..... 2-27

**FRONT CONTROL PWB PATTERN** ..... 2-29

**SIDE CONTROL PWB PATTERN** ..... 2-30

**CRT SOCKET PWB PATTERN** ..... 2-31

**AV SW PWB PATTERN** ..... 2-32

## SEMICONDUCTOR SHAPES

### TRANSISTOR

BOTTOM VIEW	FRONT VIEW				TOP VIEW
					CHIP TR 

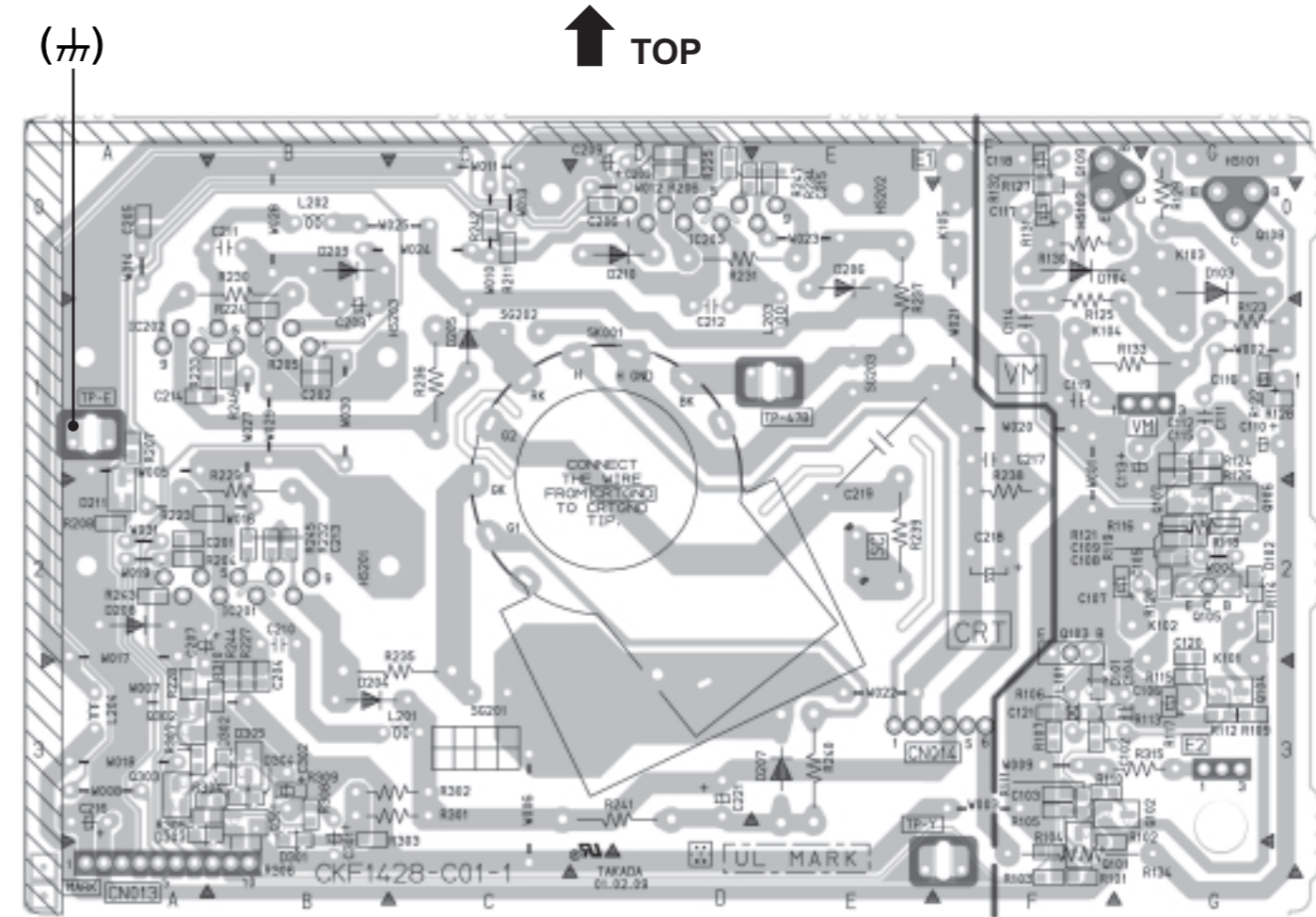
### IC

BOTTOM VIEW	FRONT VIEW			TOP VIEW

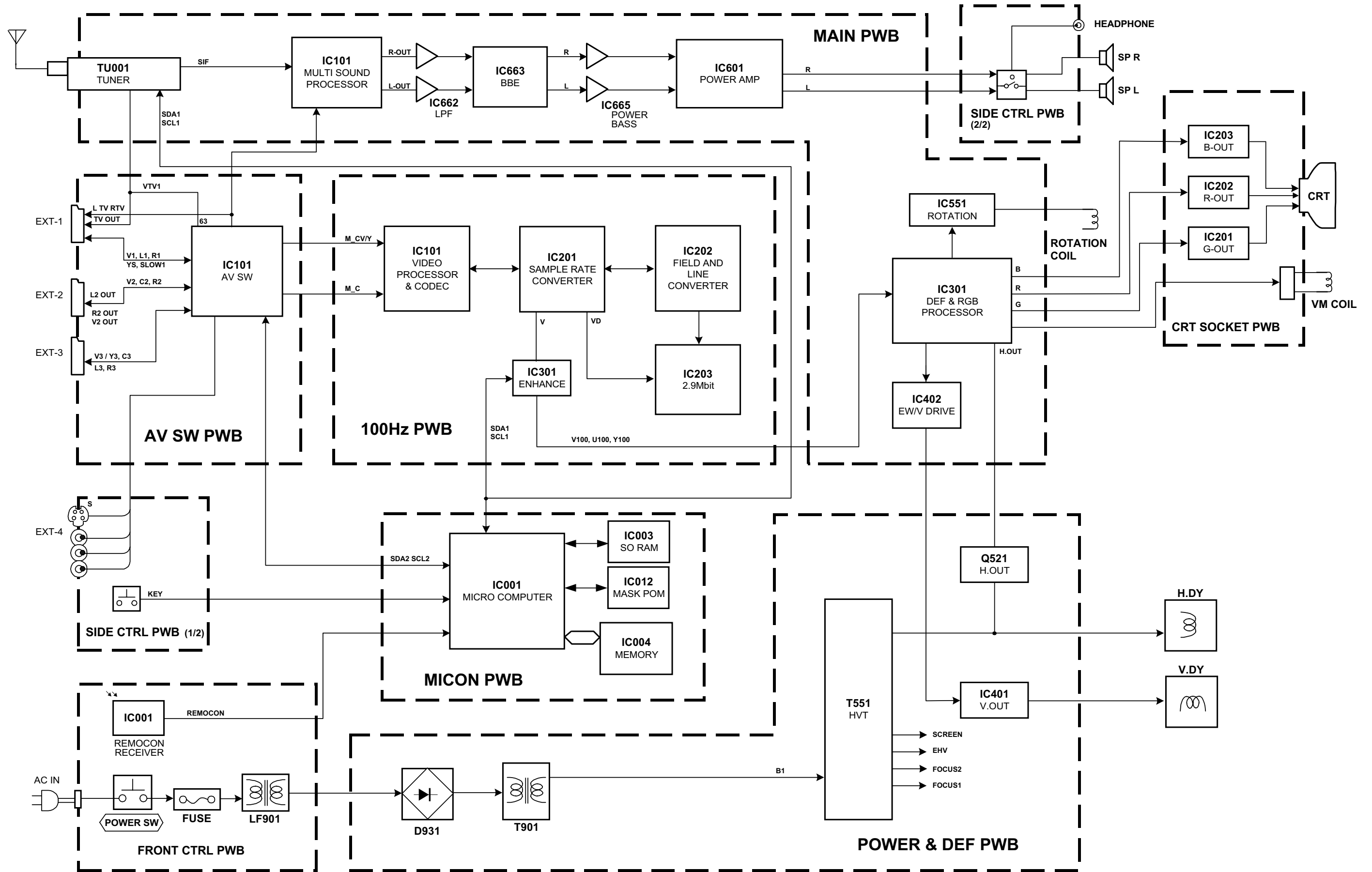
### CHIP IC

TOP VIEW	

## CRT SOCKET PWB PATTERN



# BLOCK DIAGRAM

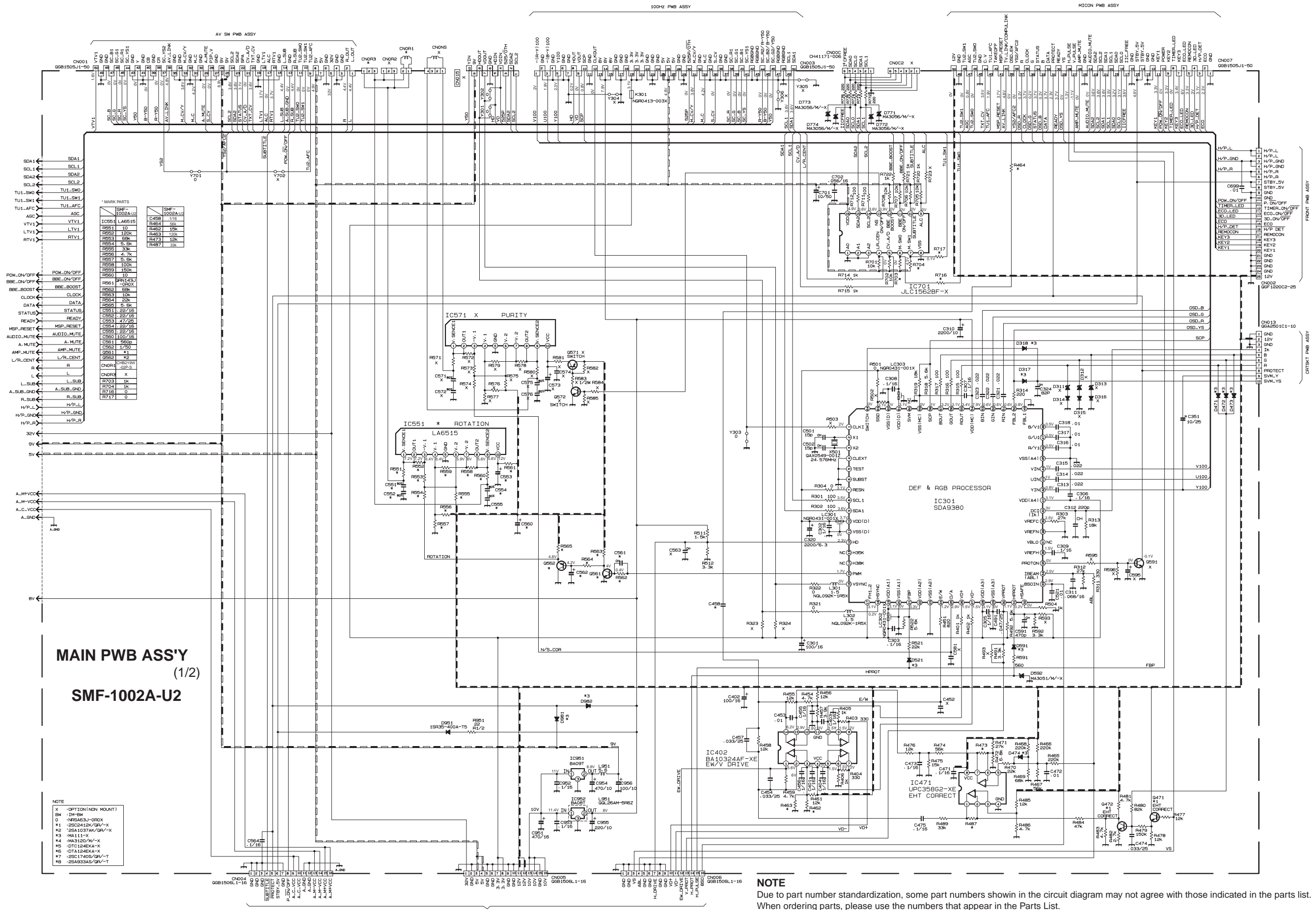




CIRCUIT DIAGRAMS MAIN PWB CIRCUIT DIAGRAM

AV32L2EUGR  
AV32L2EUBL  
AV32L2EUGY

AV32L2EUGR  
AV32L2EUBL  
AV32L2EUGY



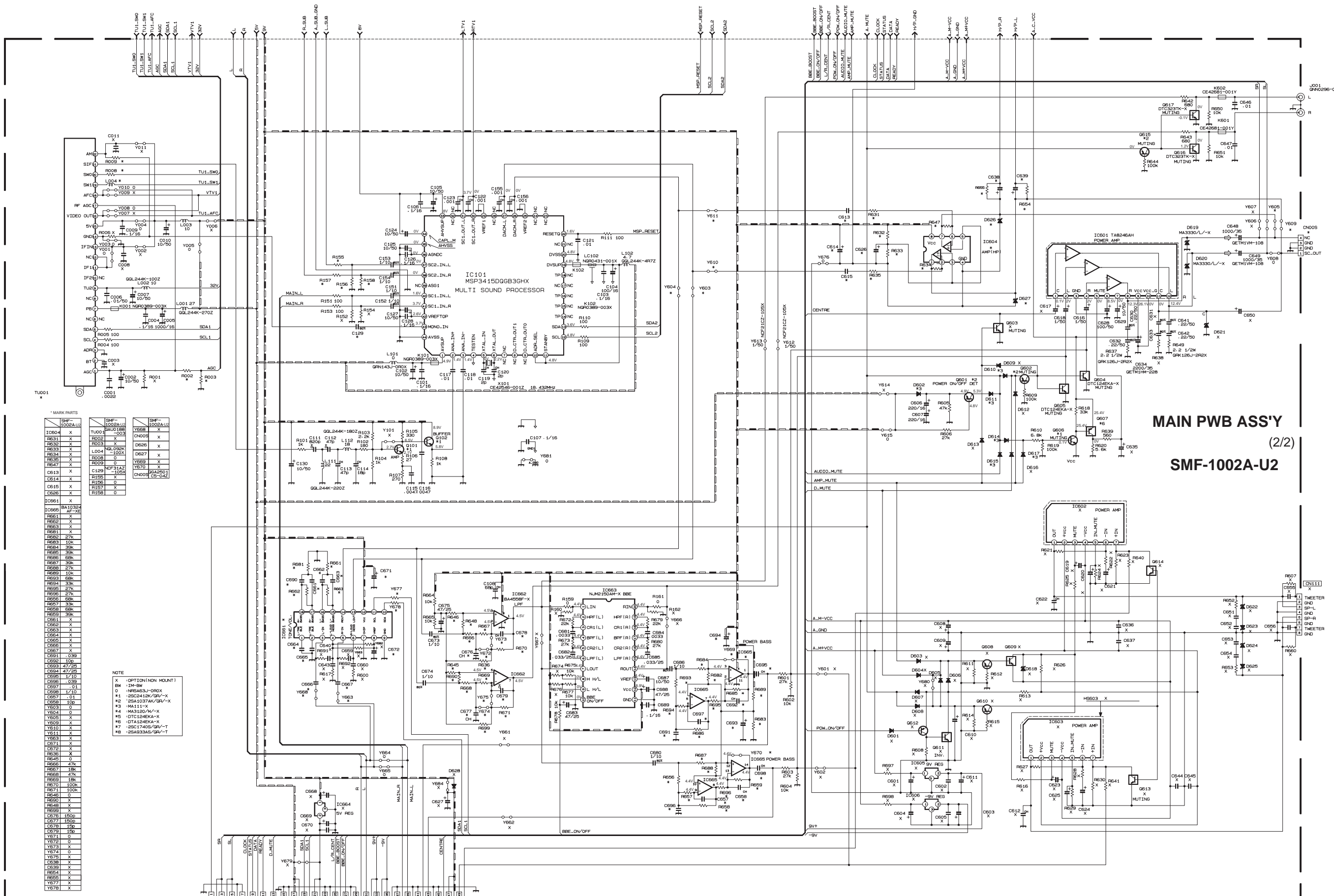
MAIN PWB ASS'Y  
(1/2)  
SMF-1002A-U2

NOTE

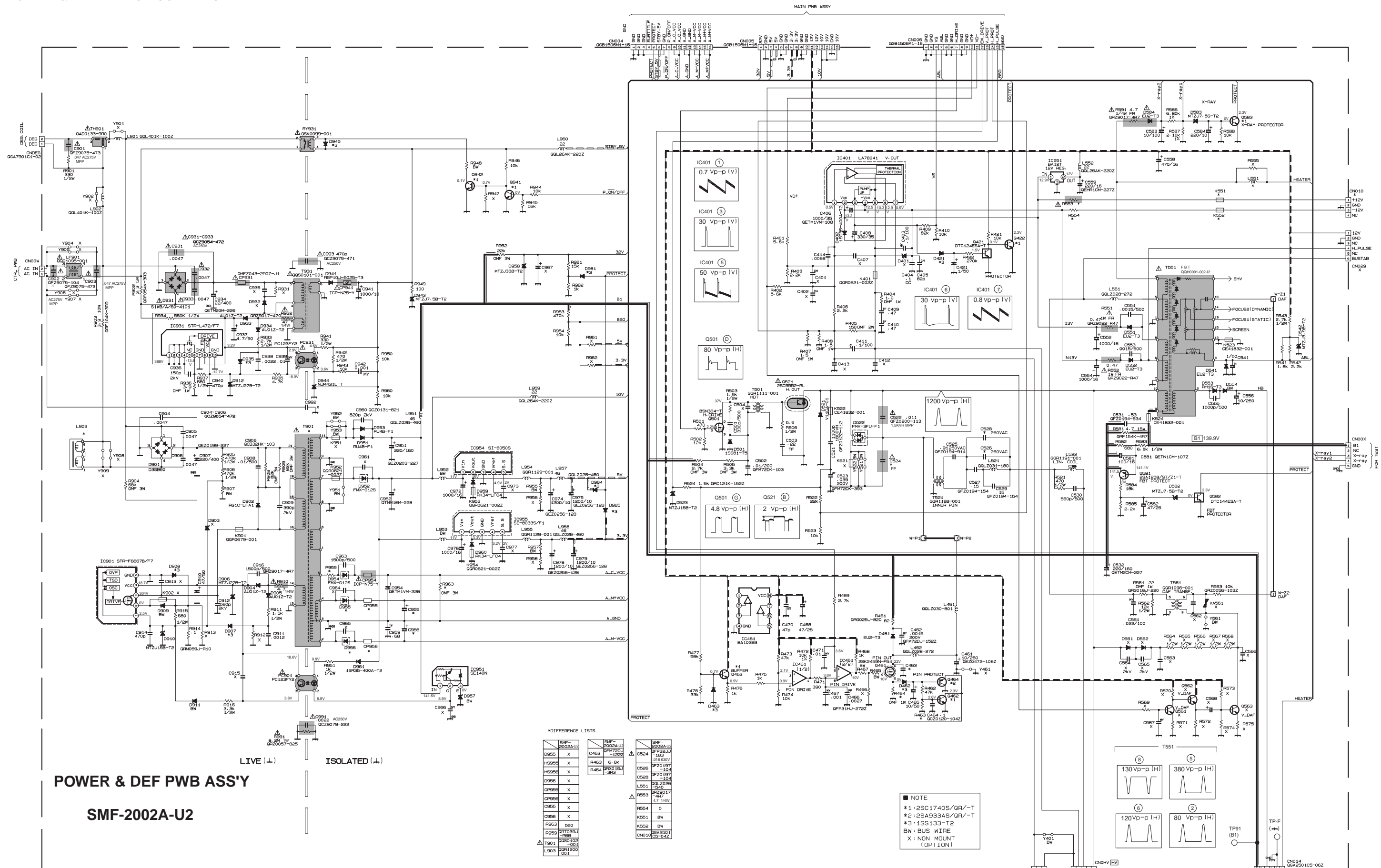
- X : OPTION (NON MOUNT)
- BW : 1M-BW
- D : NFRS463J-OROX
- #1 : 25C04120V/GRV-X
- #2 : 25A1037AK/GRV-X
- #3 : MA111-X
- #4 : MA3120/M-X
- #5 : DT124EKA-X
- #6 : DT124EKA-X
- #7 : 25C1740S/GRV-T
- #8 : 25A933AS/GRV-T

NOTE

Due to part number standardization, some part numbers shown in the circuit diagram may not agree with those indicated in the parts list. When ordering parts, please use the numbers that appear in the Parts List.



POWER & DEF PWB CIRCUIT DIAGRAM



POWER & DEF PWB ASS'Y  
SMF-2002A-U2

LIVE (L) ISOLATED (I)

DIFFERENCE LISTS

SMF-2002A-U2	SMF-2002A-U2	SMF-2002A-U2
D905 X	C483 GF720J-1B3	C524 2FP32JU-1B3
H5925 X	R463 5-BW	C526 2FZ0197-104
H5926 X	R464 2F010J-3R3	C528 2FZ0197-104
D956 X		L951 GQL2026-460
CP956 X		L952 2FZ0197-104
CP956 X		L953 2FZ0197-104
C956 X		L954 GQL2026-460
R953 800		L955 2FZ0197-104
R959 2F010J-3R3		L956 2FZ0197-104
T901 2F010J-3R3		L957 2FZ0197-104
L903 GQR1200-C01		L958 2FZ0197-104

NOTE  
\*1: 2SC1740S/GA/-T  
\*2: 2SA933AS/GA/-T  
\*3: 1SS133-T2  
BW: BUS WIRE  
X: NON MOUNT (OPTION)

NOTE  
Due to part number standardization, some part numbers shown in the circuit diagram may not agree with those indicated in the parts list.  
When ordering parts, please use the numbers that appear in the Parts List.

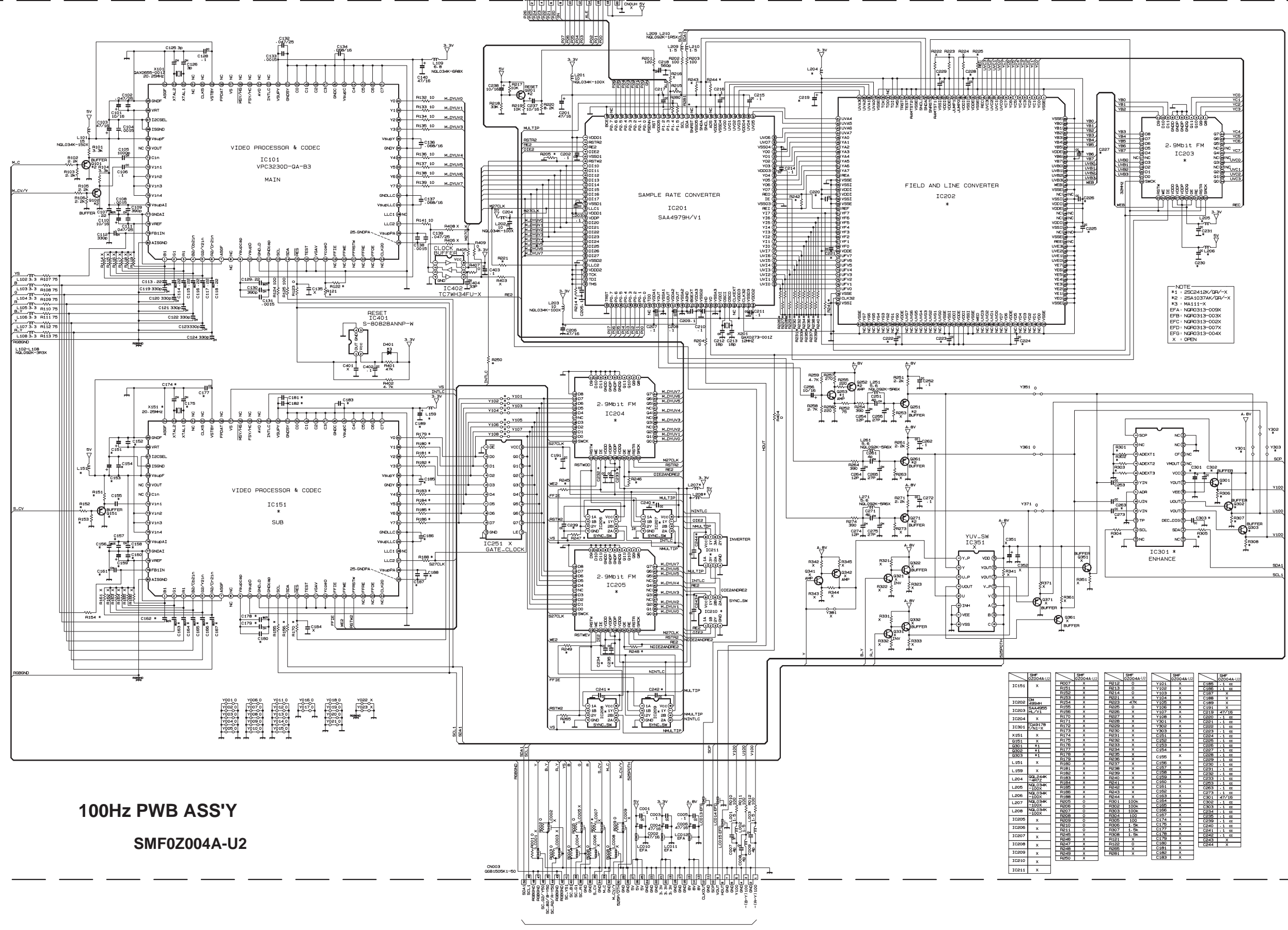


100Hz PWB CIRCUIT DIAGRAM

AV32L2EUGR  
AV32L2EUBL  
AV32L2EUGY

AV32L2EUGR  
AV32L2EUBL  
AV32L2EUGY

**NOTE**  
Due to part number standardization, some part numbers shown in the circuit diagram may not agree with those indicated in the parts list.  
When ordering parts, please use the numbers that appear in the Parts List.



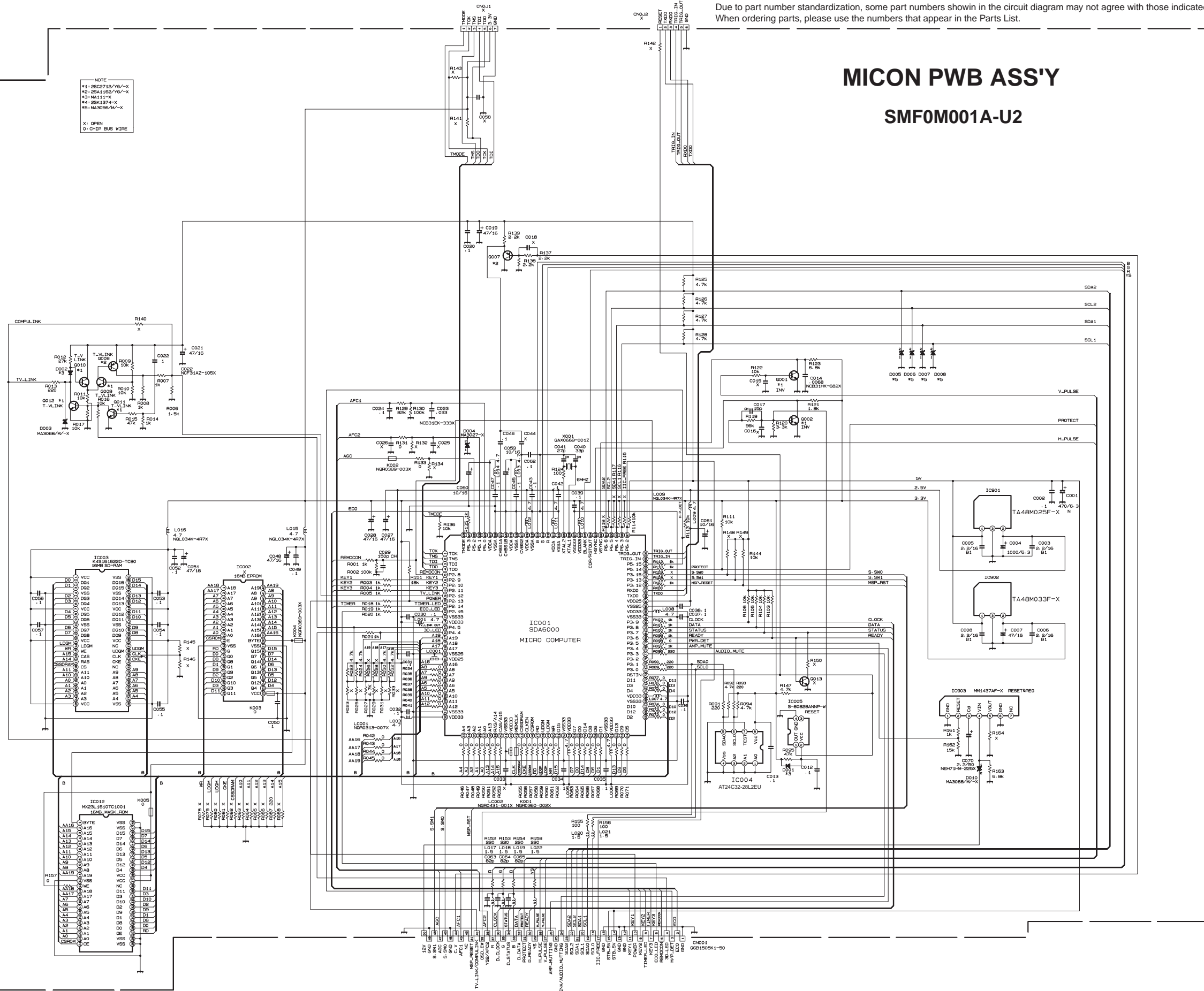


NOTE  
Due to part number standardization, some part numbers shown in the circuit diagram may not agree with those indicated in the parts list.  
When ordering parts, please use the numbers that appear in the Parts List.

# MICON PWB ASS'Y

## SMF0M001A-U2

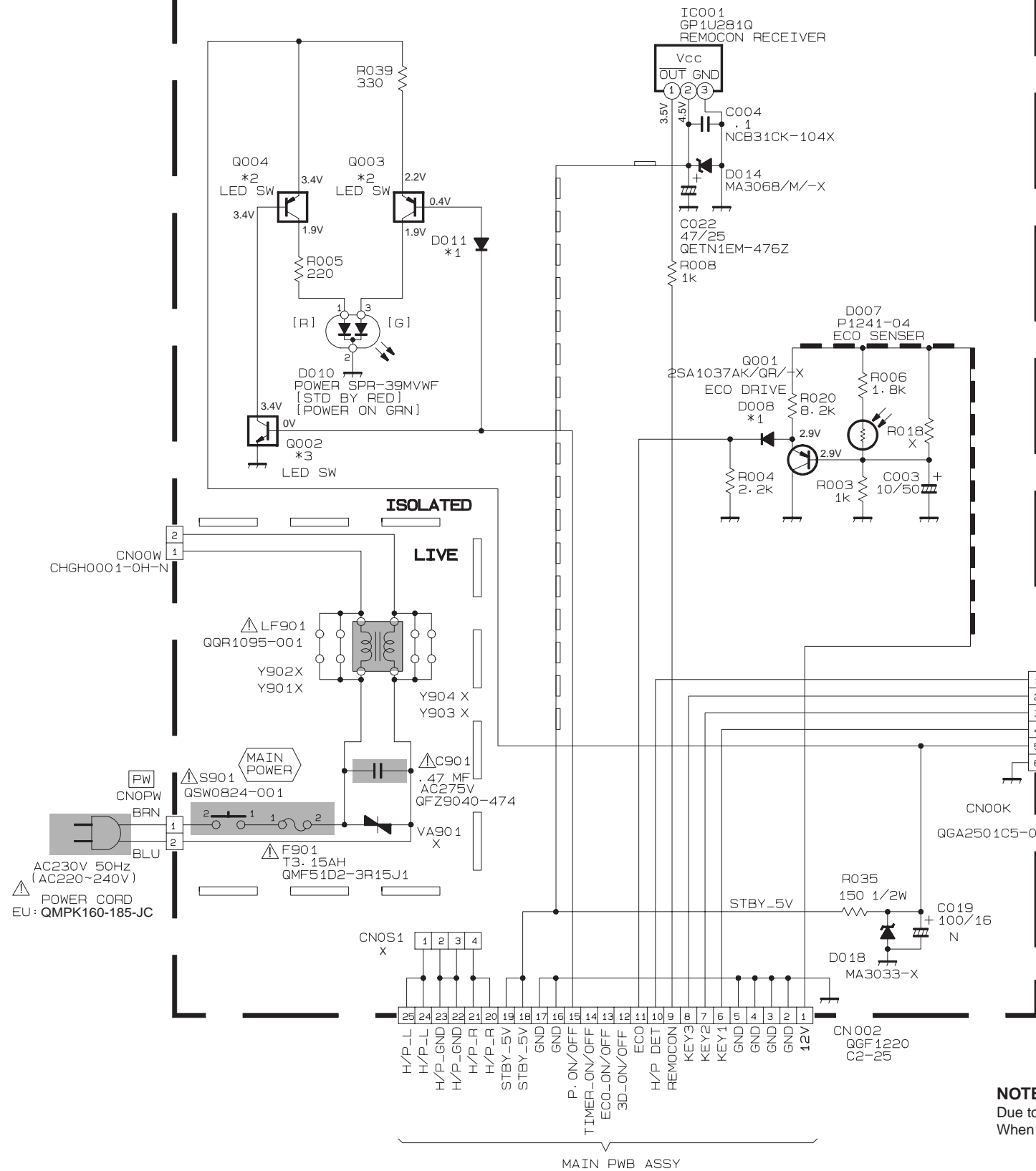
NOTE  
#1: 25C02712/YG/-X  
#2: 25A1182/YG/-X  
#3: M41117-X  
#4: 25K1374-X  
#5: M43056/M/-X  
  
X: OPEN  
O: CHIP BUS WIRE



FRONT CONTROL & SIDE CONTROL PWB CIRCUIT DIAGRAM

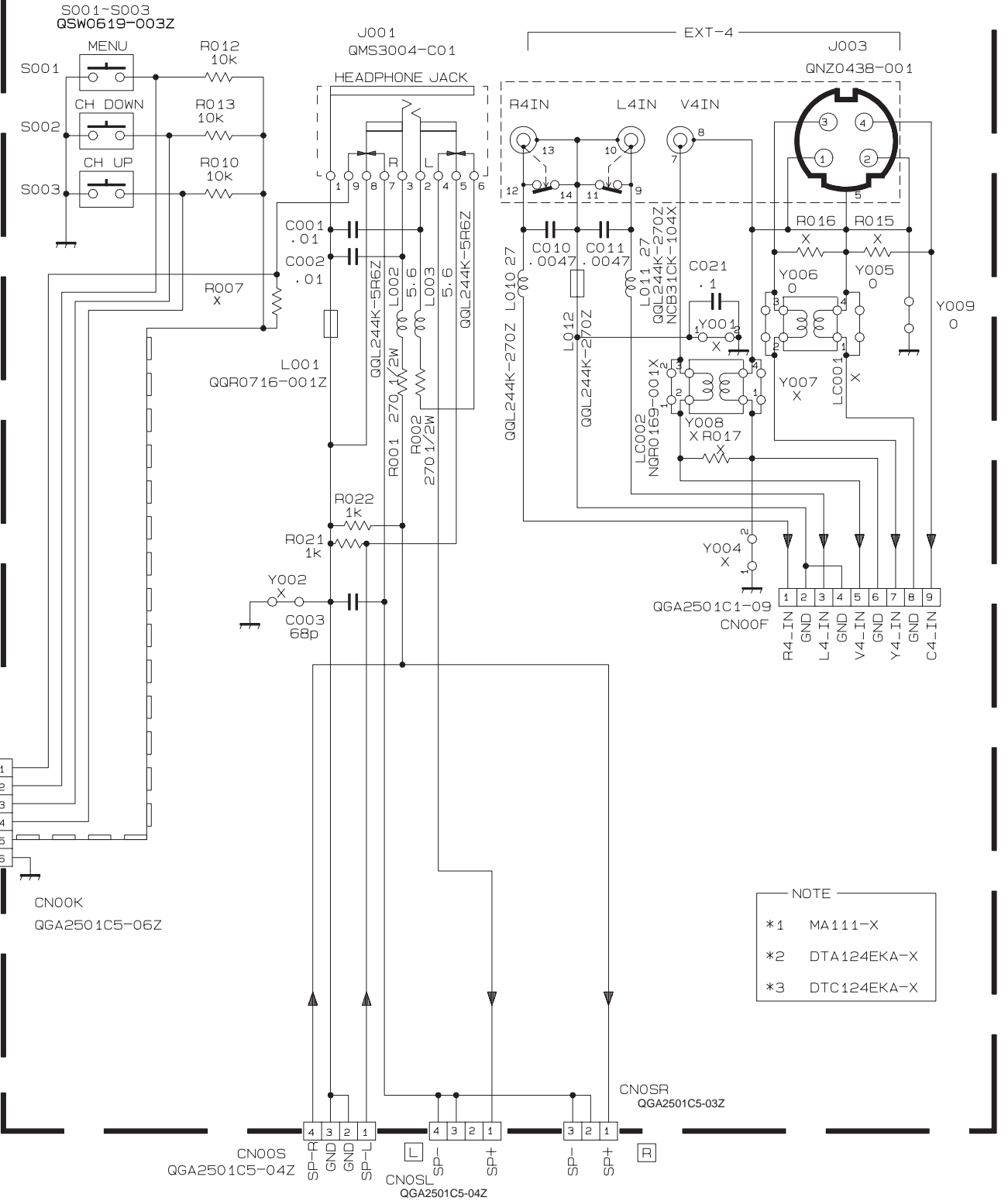
FRONT CONTROL PWB ASS'Y

SMF-8001A-U2



SIDE CONTROL PWB ASS'Y

SMF-8101A-U2



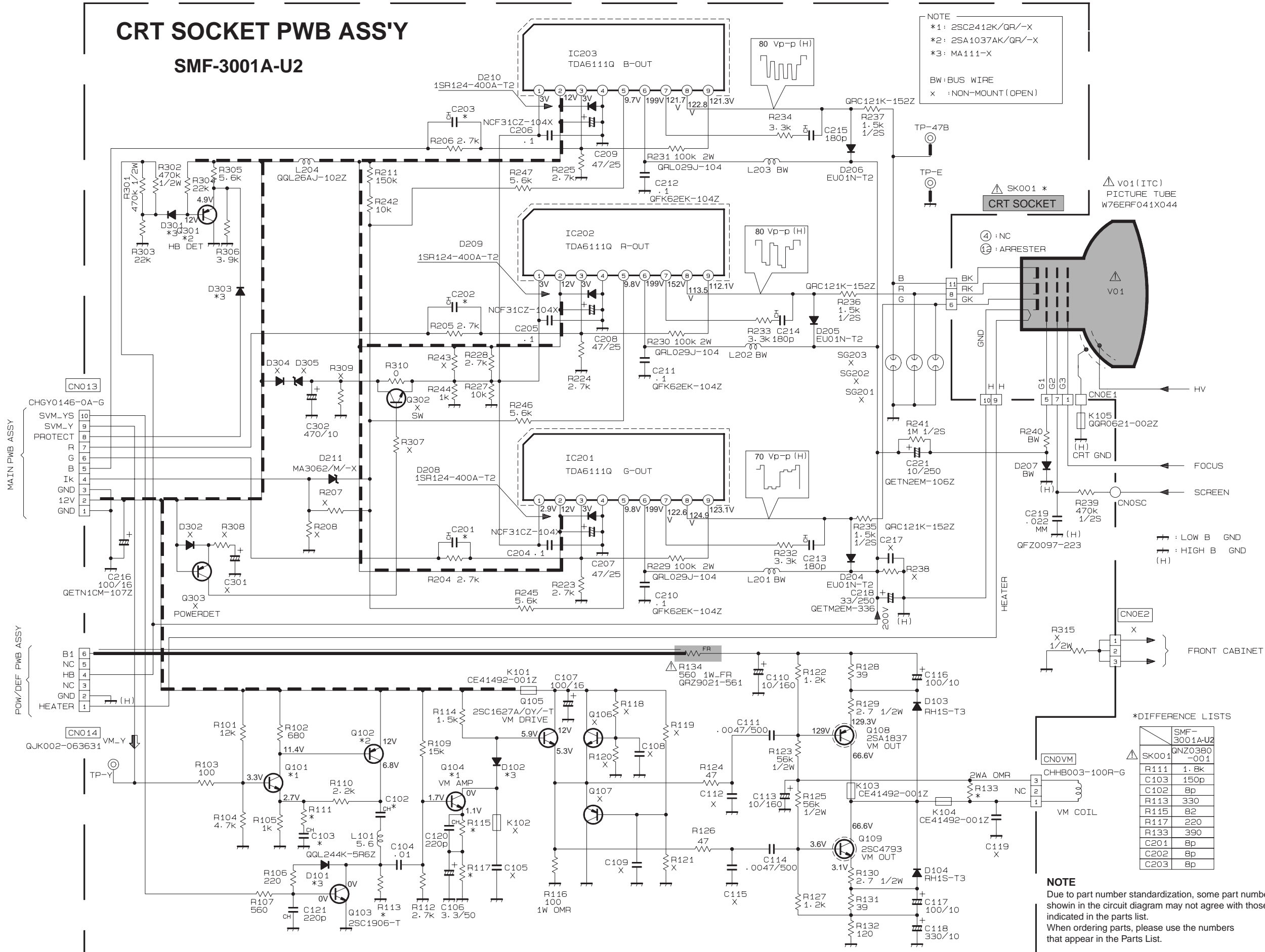
NOTE  
\*1 MA111-X  
\*2 DTA124EKA-X  
\*3 DTC124EKA-X

NOTE  
Due to part number standardization, some part numbers shown in the circuit diagram may not agree with those indicated in the parts list.  
When ordering parts, please use the numbers that appear in the Parts List.

# CRT SOCKET PWB ASS'Y

## SMF-3001A-U2

NOTE  
\*1: 2SC2412K/QR/-X  
\*2: 2SA1037AK/QR/-X  
\*3: MA111-X  
  
BW: BUS WIRE  
X: NON-MOUNT (OPEN)



\*DIFFERENCE LISTS

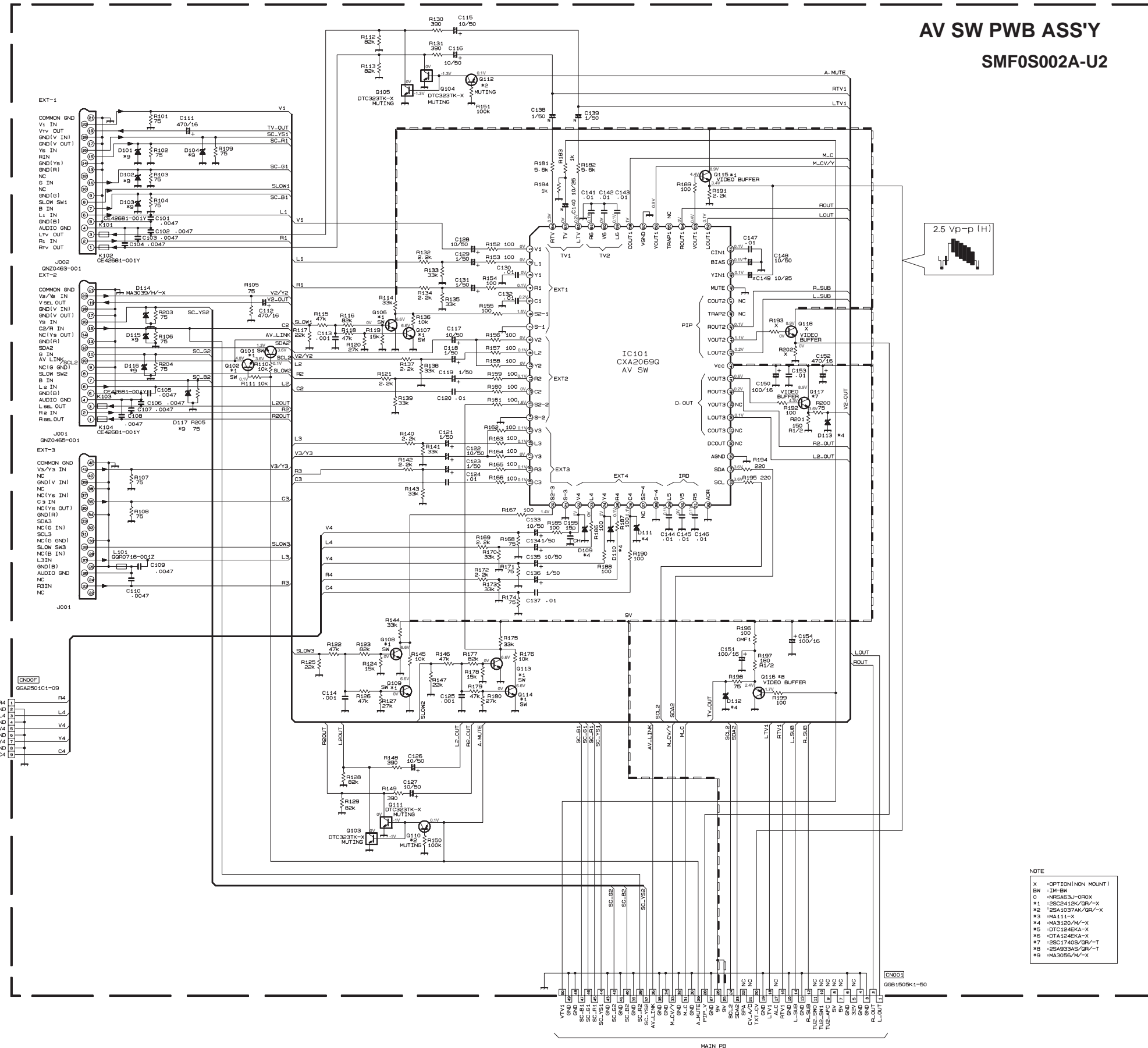
Part No.	SMF-3001A-U2	QNZ0380-001
R111	1.8k	
C103	150p	
C102	8p	
R113	330	
R115	82	
R117	220	
R133	390	
C201	8p	
C202	8p	
C203	8p	

NOTE  
Due to part number standardization, some part numbers shown in the circuit diagram may not agree with those indicated in the parts list.  
When ordering parts, please use the numbers that appear in the Parts List.



NOTE

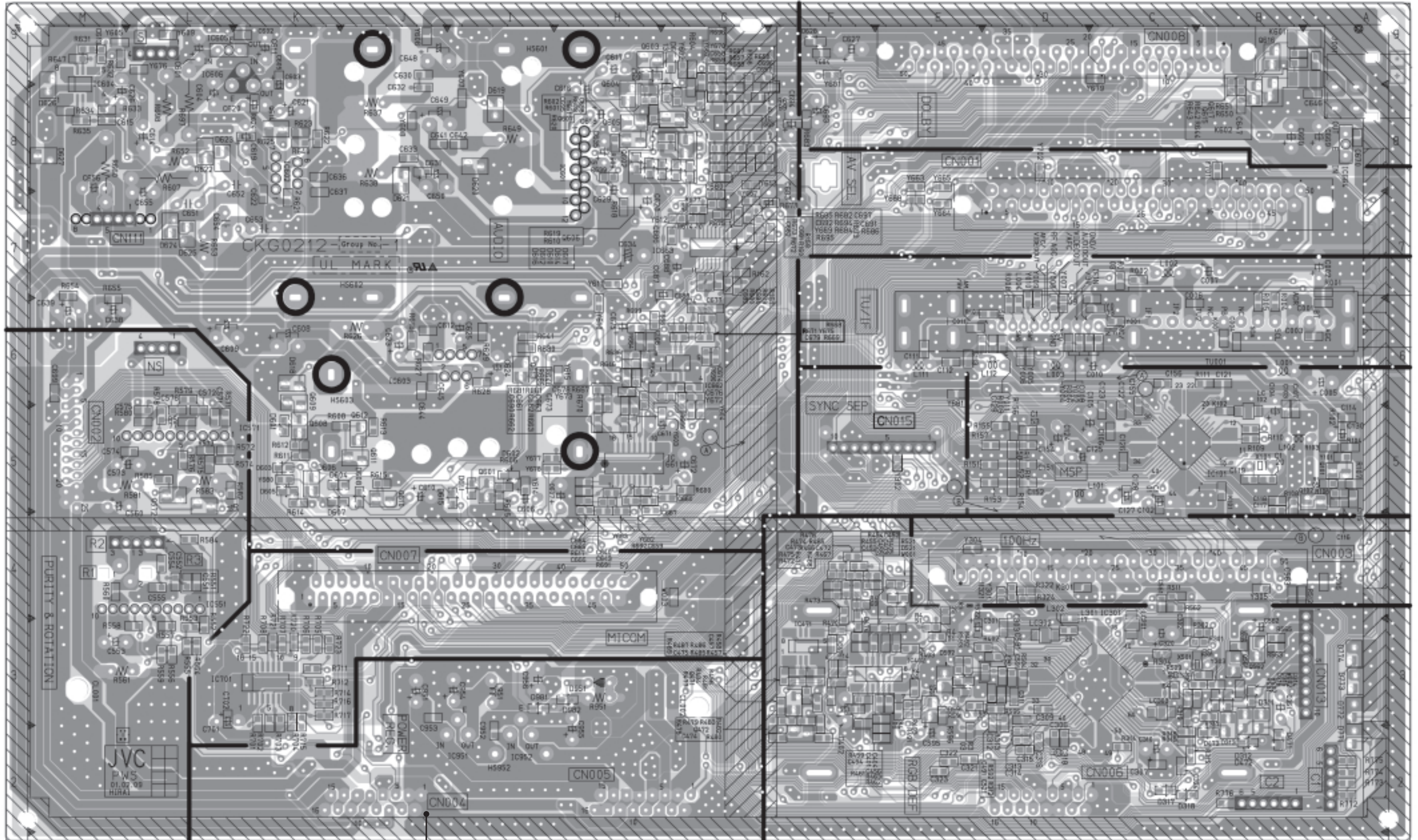
Due to part number standardization, some part numbers shown in the circuit diagram may not agree with those indicated in the parts list. When ordering parts, please use the numbers that appear in the Parts List.





PATTERN DIAGRAMS MAIN PWB PATTERN

← FRONT



(77)

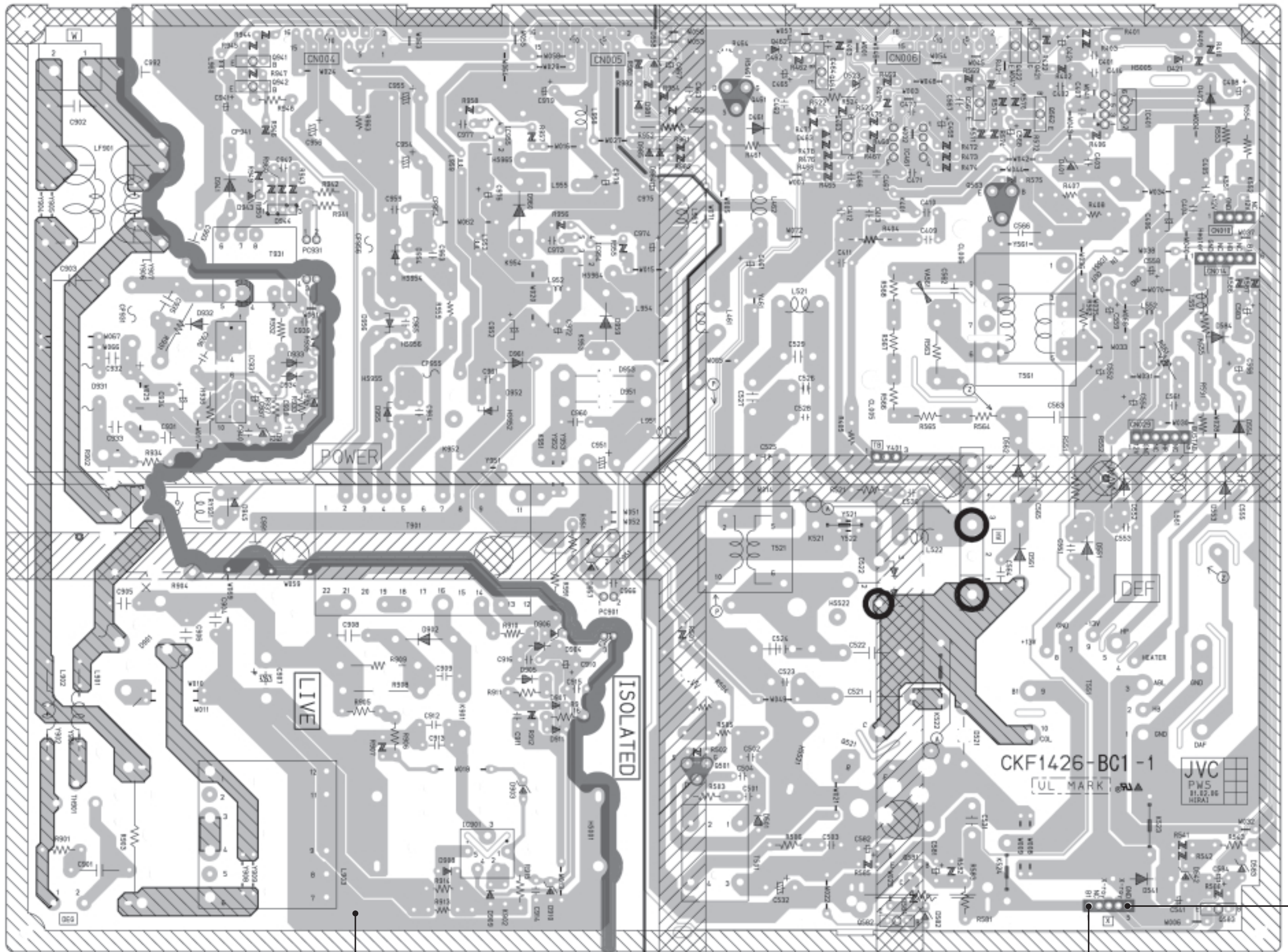


AV32L2EUGR  
AV32L2EUBL  
AV32L2EUGY

AV32L2EUGR  
AV32L2EUBL  
AV32L2EUGY

POWER & DEF PWB PATTERN

FRONT



No.51817

(T)

2-23

2-24

No.51817

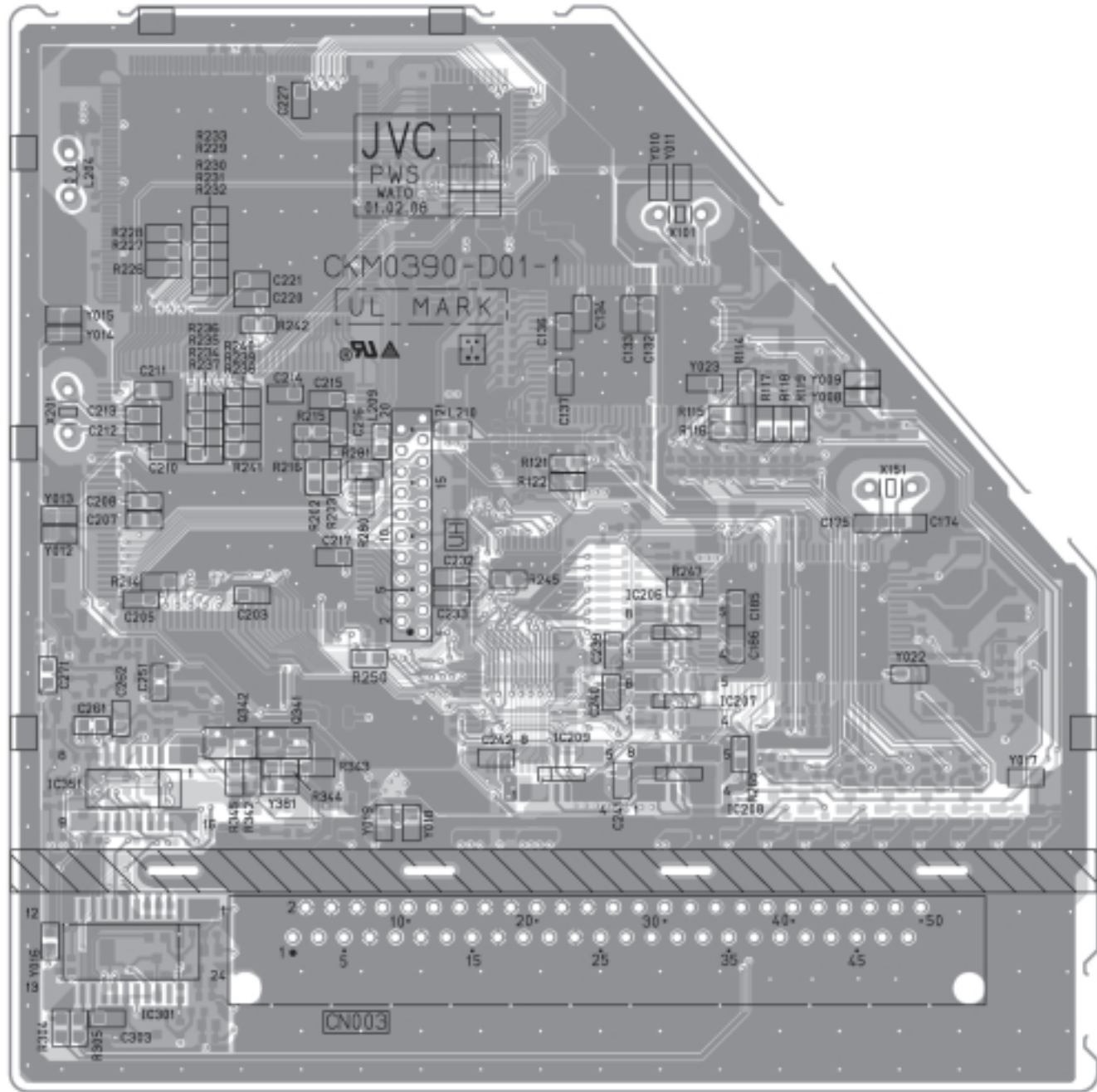
TP-91(B1)

TP-E  
(T)



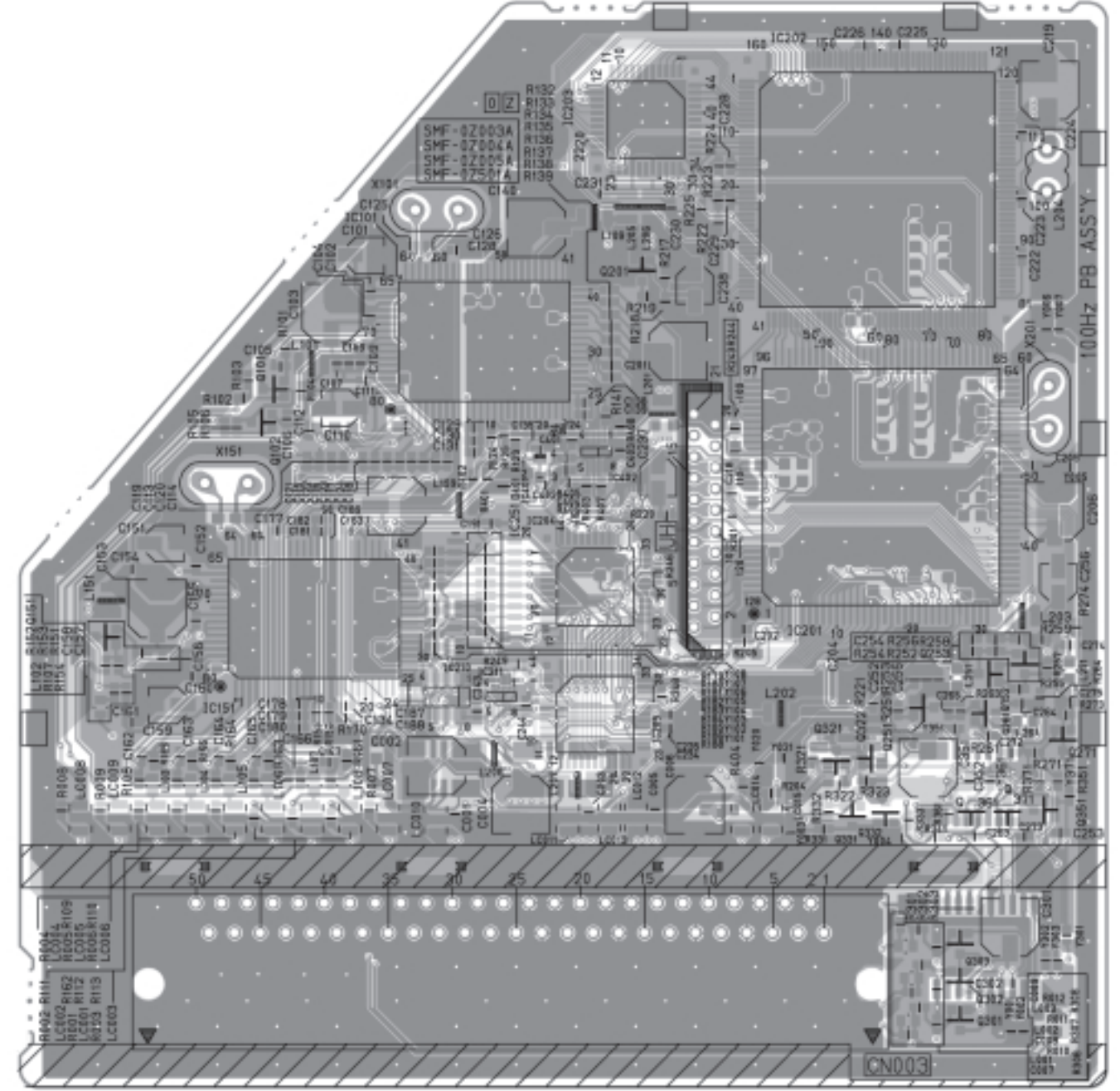
100Hz PWB PATTERN (SOLDER SIDE)

AV32L2EUGR  
AV32L2EUBL  
AV32L2EUGY



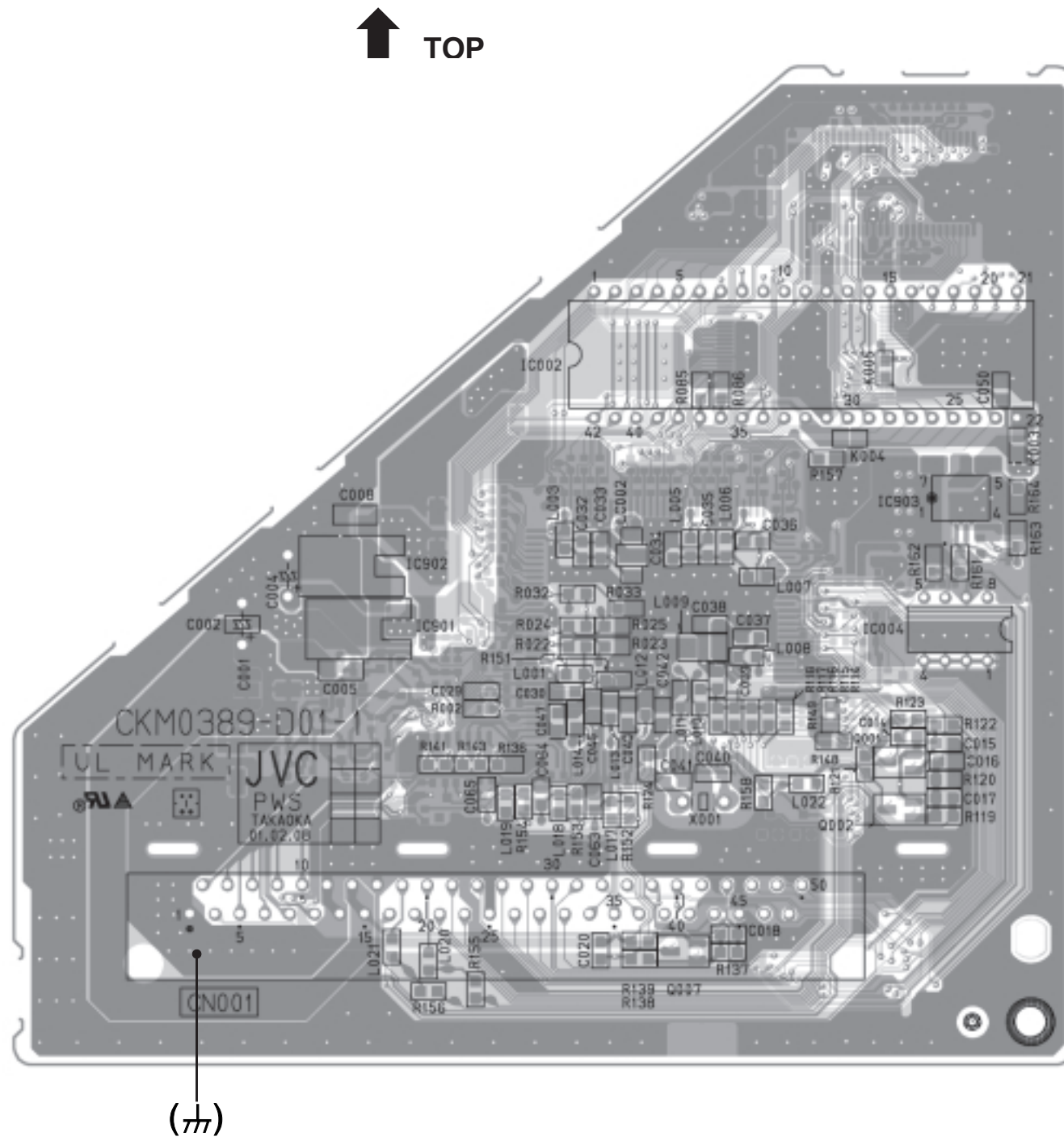
100Hz PWB PATTERN (PARTS SIDE)

AV32L2EUGR  
AV32L2EUBL  
AV32L2EUGY



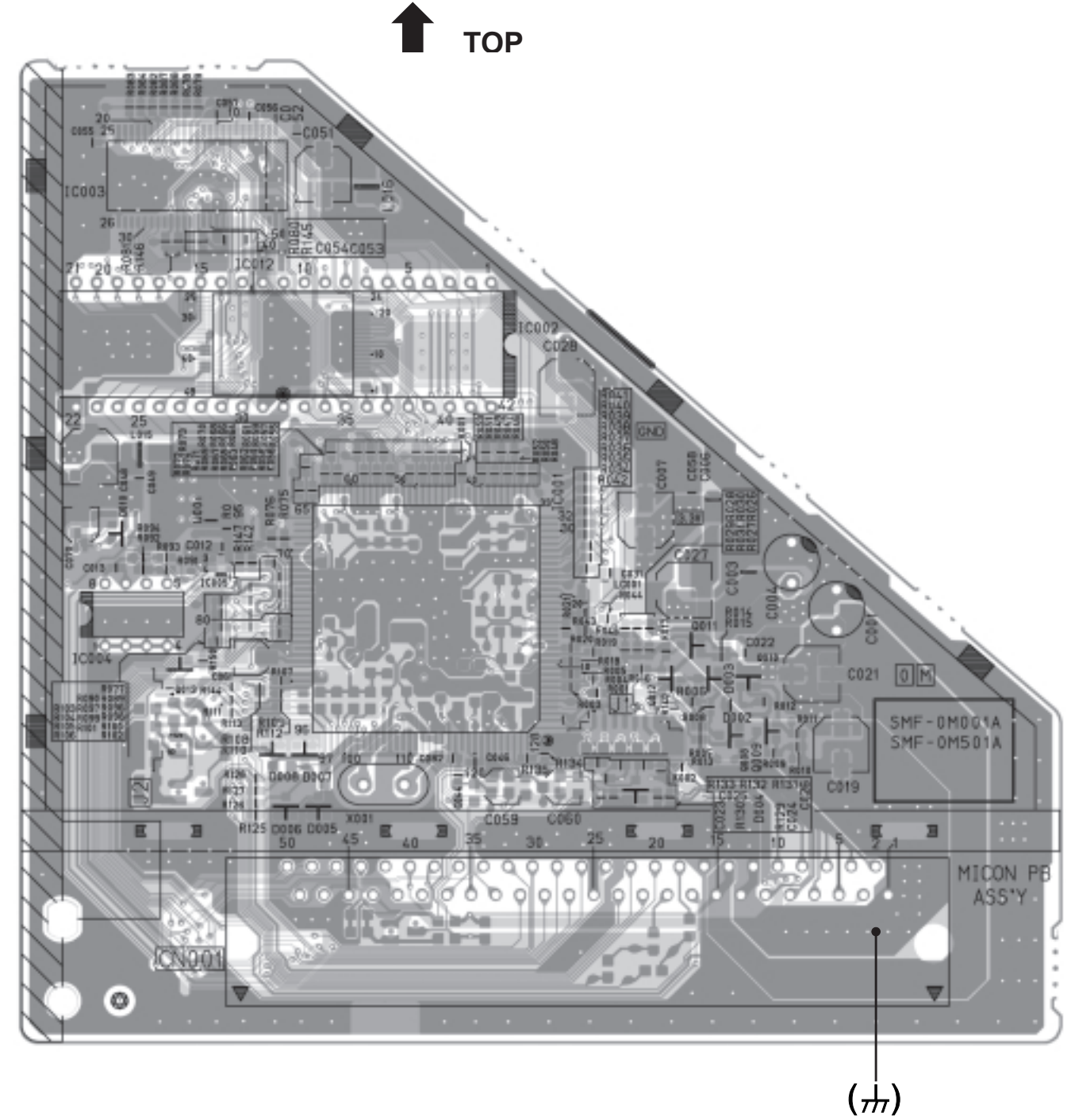


MICON PWB PATTERN (SOLDER SIDE)

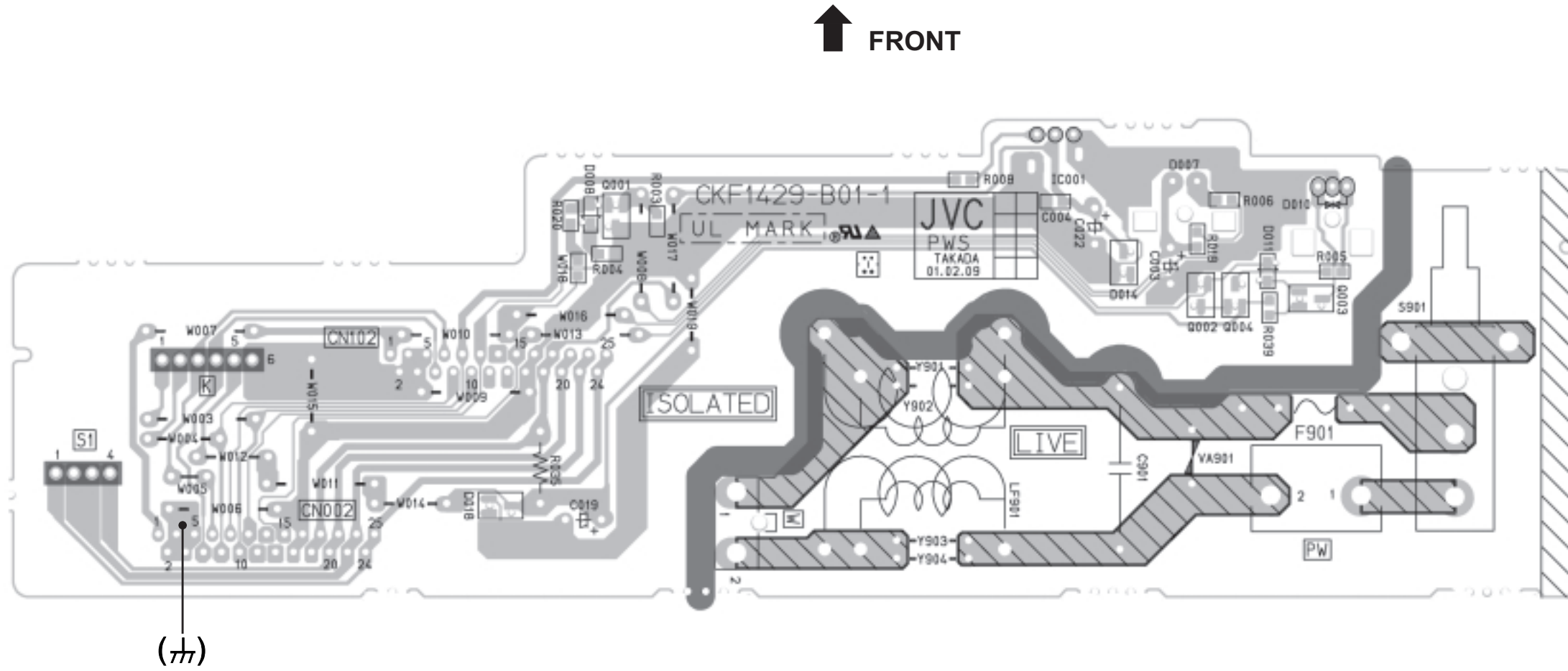


AV32L2EUGR  
AV32L2EUBL  
AV32L2EUGY

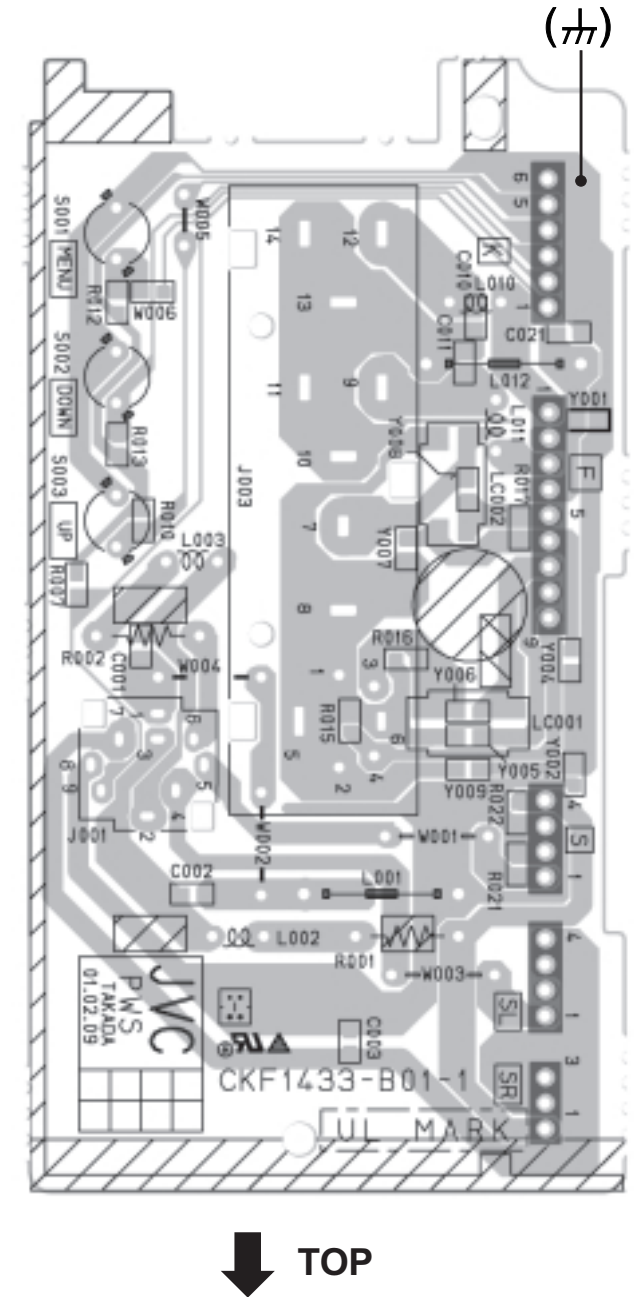
AV32L2EUGR  
AV32L2EUBL  
AV32L2EUGY  
MICON PWB PATTERN (PARTS SIDE)



FRONT CONTROL PWB PATTERN



SIDE CONTROL PWB PATTERN





# JVC

VICTOR COMPANY OF JAPAN, LIMITED

HOME AV NETWORK BUSINESS UNIT 12, 3-chome, Moriya-cho, Knagawa-ku, Yokohama, Kanagawa-prefecture, 221-8528, Japan

AV32L2EUGR-U #4  
AV32L2EUGR-U #3  
AV32L2EUGY-U #3



Printed in Japan  
VP 0106  
DP6051